

‘It’s Not on the Inventory List!: Tracking Plants in a Semi-naturalized Meadow’

Julie Rotramel: Plant Recorder

M^T.CUBA
CENTER



Various Interests in How Plant Information is Maintained

- **Plant Recorder: data integrity and consistency**
- **Horticulture Staff: ease of finding plantings in their areas**
- **Director of Collections: provenance priority, separation of wild collected accessions**
- **Education: clear and complete plant lists with mapped locations**

The Meadow

- **The meadow is mowed every year, so labels are maintained only on the periphery**
- **Plants are mapped generally on the periphery where distinct plant masses can be distinguished and labeled, woody plants are also mapped.**
- **Central portion of meadow is naturalized and is consistently supplemented with new plant material**

M^T.CUBA
CENTER

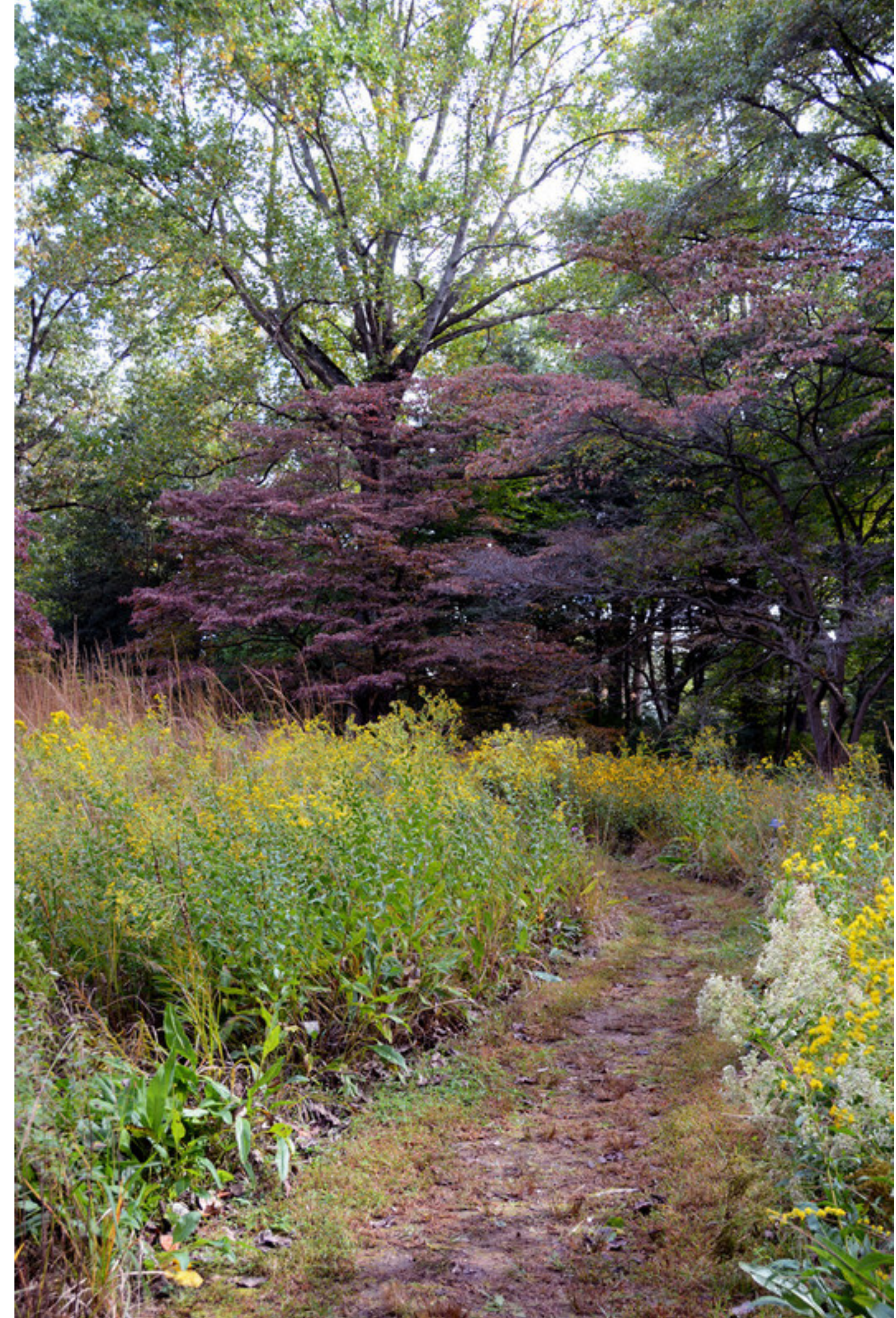


Indistinguishable Plantings

Mt. Cuba often uses the Non-existing item status 'Removed-Indistinguishable' if a mass of plants is added to an existing mass in a planting bed.

- **Keeps the inventory list clean**
- **Non-existing record shows all plantings that were added to the bed if we want a full list of plant material**
- **BUT provenance of the existing mass becomes muddled**

M^T.CUBA
CENTER



Item Status Type: Not Existing

Item Status: Removed- Indistinguishable

Item no. °	Type °	Location °	Loc. ref. ~	Status °	Date ~	No. sp.	...
A	Planting	260•		Removed- In...	9/13/2018	mass	
A	Planting	GH•		Inventoried	1/18/2018	70	
A	Planting	GH•		Planted	7/13/2017	mass	
A	Planting	UNKNOWN•		Inventoried	1/13/2017		
B	Propagation	COMPLETE•		Complete- To Ga...	9/13/2018		

Item properties	
Item no.	Current 20170340*A <input checked="" type="checkbox"/>
Type °	Planting
References	
Cons. no. ~	Cons. no.-2 ~
Storage no. °	External ref. ~
Item ref.	
Location	
Location code °	260•
Location name °	Meadow
Location ref. ~	subref. ~
Coord. lat. x	long. y
Coord. precision	Altitude
Status	
Status °	Removed- Indistinguishable
Condition °	No. specimens <input type="text"/> mass
Date ~	Person ° 9/13/2018 Tinalli, Emily
Label type-1 °	no. status °
Label type-2 °	no. status °
Measurements (foot - decimal)	
Material	
Restriction °	
Comments ~	13 remaining plants removed from GH and added to existing mass of Cirsium pumilum (20130182*A...
Reg. init.	date jer 10/22/2020

“13 plants removed from GH and added to existing mass of Cirsium pumilum (20130182*A) in bed 260, indistinguishable”

Item Status Type: Existing

Item Status: Addition to Mass

Item no. ° /	Type °	Location °	Loc. ref. ~	Status °	Date ~	No. sp.	...
A	Planting	260•		Addition to Mass	10/15/2019	mass	
A	Planting	260•		Addition to Mass	9/13/2018	mass	
A	Planting	260•		Planted	11/12/2014	mass	
A	Planting	GH•		Seed Sown	5/21/2014	900	
A	Planting	GH•		Received	8/1/2013	mass	
B	Propagation	COMPLETE•		Complete- To Gar...	11/12/2014		

Item properties

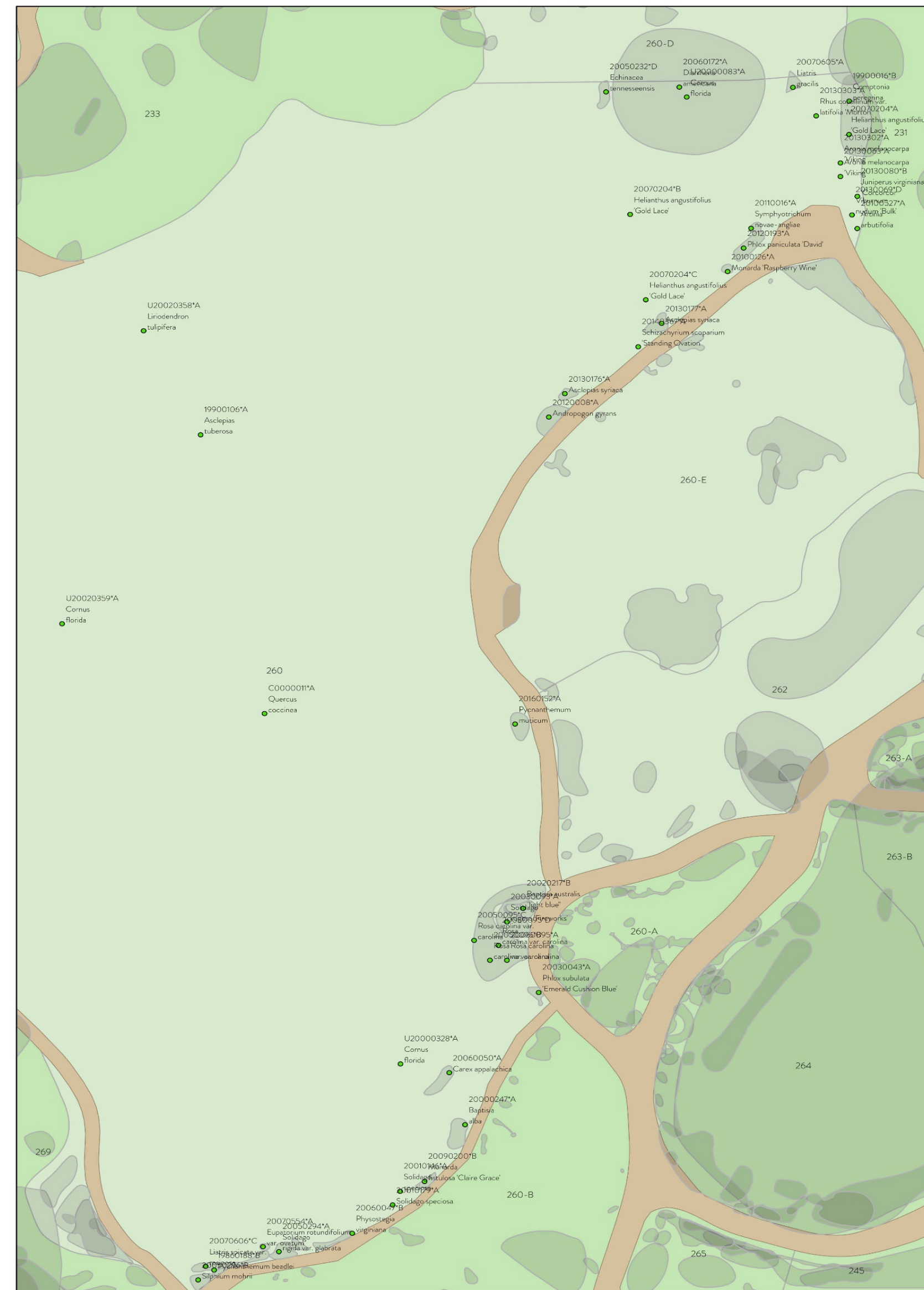
Item no.	Current	20130182*A	<input type="checkbox"/>
Type °	Planting		
References			
Cons. no. ~	Cons. no.-2 ~		
Storage no. °	External ref. ~		
Item ref.			
Location			
Location code °	260•		
Location name °	Meadow		
Location ref. ~	subref. ~		
Coord. lat. x	long. y		
Coord. precision	Altitude		
Status			
Status °	Addition to Mass		
Condition °	No. specimens	mass	
Date ~	Person °	9/13/2018	Tinalli, Emily
Label type-1 °	no.	status °	
Label type-2 °	no.	status °	
Measurements (foot - decimal)			
Material			
Restriction °			
Comments ~	13 plants from 20170340*A removed from GH and added to existi...		

“13 plants from 20170340*A removed from GH and added to existing mass”

Conflicts Between Records and Physical Plantings

- **When the meadow was first created, many species that were planted and expected to naturalize were deaccessioned immediately**
- **In IrisBG this translates to a Non-existing item status type**
- **As a result, some species do not show up on the 'existing' meadow inventory list at all, despite their clear presence in that area.**

M^T.CUBA
CENTER



Questions for Discussion

1

How might you manage plant records in the meadow while keeping in mind the needs of each of these interest groups? Can all of these needs be satisfied with one solution?

2

What do you see as the value or purpose of maintaining provenance information in a naturalized setting?

3

Given its existing functionality, how might you track additions to a naturalized planting accession in IrisBG beyond an entry in the item history? Could custom attributes help with this problem?

A scenic autumn landscape featuring a path covered in fallen leaves, surrounded by trees with vibrant orange and red foliage. The path leads through a field of tall, golden grasses towards a forest of trees with varying shades of autumn colors. The overall atmosphere is peaceful and serene.

Thank
You